



- A** Rebar processing machinery
- B** Hoisting machinery
- C** Concrete mortar machinery
- D** Piling machinery
- E** Building maintenance unit

China Academy of Building Research

Beijing Institute of Construction Mechanization Co.,Ltd.

Langfang CABR Construction Machinery Technology Co., Ltd.
Beijing CABR Building Maintenance Machinery Technology Co., Ltd.

CONTENTS

Company profile

China Academy of Building Research -----	1
Beijing Institute of Construction Mechanization Co.,Ltd. -----	2
Langfang CABR Construction Machinery Technology Co., Ltd. -----	5
Beijing CABR Building Maintenance Machinery Technology Co., Ltd.-----	7
CABR Information Technology Co., Ltd.-----	7
NETEC Inspection and Testing (Beijing) Co.,Ltd.-----	8

Rebar processing machinery -----9

- A1 Steel wire processing machinery
- A2 Steel rod bar processing machinery
- A3 Automatic steel bar welding line
- A4 Rebar mechanical splicing technology

Hoisting machinery -----11

- B1 Building hoist
- B2 Hydraulic jacking bridge
- B3 Mast-climbing work platform
- B4 Self erecting tower crane

Concrete mortar machinery -----13

- C1 Concrete placing boom
- C2 Concrete pump
- C3 Mortar machinery
- C4 Concrete bucket

Piling machinery -----16

- D1 Multi-function drilling rigs
- D2 CBM drilling rigs
- D3 Excavator-mounted hydraulic vibratory pile driver

Building maintenance unit -----17

- E1 BMU with fixed jib
- E2 BMU with telescopic jib
- E3 BMU with luffing jib
- E4 BMU with telescopic column
- E5 Four-link BMU
- E6 Other type

Company profile

China Academy of Building Research

Founded in 1953, China Academy of Building Research is affiliated to the State-owned Assets Supervision and Administration Commission of the State Council and is the largest comprehensive research and development institution in the national construction industry.

➤ **Prominent Industry Position:**

The largest technology research and development institution in the construction industry

The most powerful standard specification research and development base

The country's most authoritative construction engineering quality inspection center

A complete set of technology suppliers covering the whole industry chain with the widest industry coverage

➤ **Strong scientific research ability:**

More than 70 research fields such as building structure, foundation, engineering earthquake resistance, building environment and energy saving, basically covering all technical directions of architecture

Completed more than 3,800 scientific research achievements, and nearly 1,000 national and industry standard projects

Won more than 100 national science and technology awards and nearly 600 provincial and ministerial science and technology awards



➤ **Technical advantages of the whole industry chain:**

The business field covers the planning and design of construction projects, construction and supervision, testing and certification, software and informatization, materials and mechanical products, consulting and services, etc., and has strong comprehensive advantages in the whole industry chain technology.

Beijing Institute of Construction Mechanization Co.,Ltd.

Beijing Institute of Construction Mechanization Co.,Ltd.(BICM) set up by China Academy of Building Research, is a professional research institution specialized in construction machinery technical application and development, with a history of more than 60 years. Now, BICM has two brand, CABR/M and JAINE.



➤ Research field

① Research direction

Research purpose: Carry out common or key technology and standard research in the construction machinery industry, promote technological progress in the industry

Traditional field: Rebar mechanical splicing, rebar processing machinery, concrete machinery, piling machinery, aerial work machinery, hoisting machinery and its safety management technology, elevator safety monitoring technology and other fields

Emerging fields: Key technologies and equipment for industrialized production of precast concrete components, special platform technology and equipment for lifting and transportation for industrialized building construction, automated wall masonry technology and equipment, existing building elevator renovation technology, rebar processing smart factory, information integration application, etc.

② Research achievements and awards

Scientific and technological achievements: more than 400

Formulate and revise national, industry and group standards: more than 300

Effective intellectual property rights: more than 100

Patents: 88

Editing method: 6

Obtained national, provincial and ministerial science and technology awards: more than 60

➤ Industry platform

① Domestic standardization organizations undertaken: 12

Domestic technical counterparts: 6

(Representing China in ISO meetings, voting, etc.)

- ✓ ISO/TC178 Technical Committee on Lifts, Escalators and Moving Walks
- ✓ ISO/TC195 Technical Committee on Building construction machinery and equipment : Secretariat
- ✓ ISO/ TC195/SC1 Concrete Machinery Subcommittee
- ✓ ISO/ TC195/SC2 Road Operation Machinery Subcommittee
- ✓ ISO/ TC195/SC3 Drilling and Foundation Machinery and Equipment Subcommittee
- ✓ ISO/ TC214 Technical Committee on Elevating Work Platforms

National or industry standards committee secretariats: 6

- ✓ SAC/TC196 National Elevator Standardization Technical Committee
- ✓ SAC/TC328 National Building Construction Machinery and Equipment Standardization Technical Committee
- ✓ SAC/TC335 National Elevating Working Platforms Standardization Technical Committee
- ✓ SAC/TC 227/SC1 National Hoisting Machinery Standardization Technical Committee Tower Crane Sub-Technical Committee
- ✓ SAC/TC 328/SC2 National Construction Machinery and Equipment Standardization Technical Committee Foundation Construction Equipment Sub-Technical Committee
- ✓ Technical Committee on Construction Safety Standardization of the Ministry of Housing and Urban-Rural Development

② National social organizations whose secretariat is located in the company: 14

- ✓ China Elevator Association (Level 1 Association)
- ✓ Construction Branch of Architectural Society of China
- ✓ Steel Tube Scaffold Coupler Committee of China Construction Metal Structure Association
- ✓ Construction Machinery Vocational Education Committee of China Association of Construction Education
- ✓ Standard Committee of China Elevator Association
- ✓ China Elevator Association Inspection and Testing Committee

7 branches of China Construction Machinery Association

- ✓ Decoration and Aerial Machinery Branch
- ✓ Reinforcement and Prestressed Machinery Branch
- ✓ Concrete Products Machinery Branch
- ✓ Construction Mechanization Branch
- ✓ The User Working Committee
- ✓ Construction Machinery Rental Branch
- ✓ Parking Equipment Branch
- ✓ Piling Machinery Branch of China Construction Machinery Association



BICM has 4 subsidiaries,as following:

Langfang CABR Construction Machinery Technology Co., Ltd.

Beijing CABR Building Maintenance Machinery Technology Co., Ltd.

CABR Information Technology Co., Ltd.

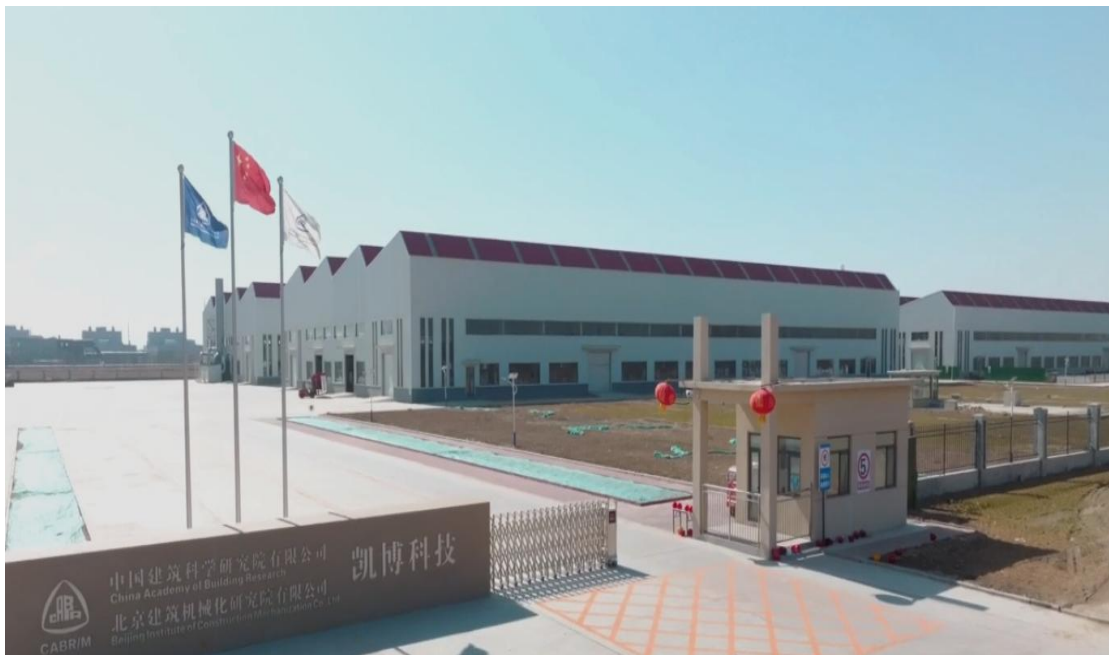
NETEC Inspection and Testing (Beijing) Co.,Ltd



Langfang CABR Construction Machinery Technology Co., Ltd. was founded in March 2003. Relying on the solid technical strength of BICM, Langfang CABR constantly provides new products and technology for the construction market with perfect testing methods, advanced processing equipment and a strict quality system. Product categories include building hoist, concrete placing boom, rebar processing equipment, mortar and concrete machinery, drilling rigs, specific equipment for cooling tower construction, self erecting tower crane, mast climbing work platform, etc. Langfang CABR has passed ISO9001, ISO14001 and ISO45001 certification. Building hoist, concrete placing boom, and drilling rigs have passed CE certification. Building hoist has passed EAC certification. Its **Shandong Branch** was found in 2021.



Langfang CABR Construction Machinery Technology Co., Ltd. Shandong Branch is located in Linyi County, Dezhou City, Shandong Province, covering an area of 30000 square meters. Shandong Branch is mainly engaged in research and development design, industrial production, maintenance and transformation of building hoists and other products. The annual production capacity of building hoists is more than 3,000 units. Relying on an excellent management team, strong technical strength, and advanced production equipment, we will provide the market with excellent products and high-quality services.



Beijing CABR Building Maintenance Machinery Technology Co., Ltd. was found in 1996. It is a specialized company engaged in the subdivision of aerial work machinery. Beijing CABR has passed ISO9001, ISO14001 and ISO45001 certification. Main product is BMU (CE and EAC approved). Beijing CABR has a strong technical force, responsible for the compilation of relevant national standards.



CABR Information Technology Co., Ltd. was found in 2020. It is a wholly-owned subsidiary of the BICM, mainly engaged in the renting of building hoists and information system integration services. There are more than 200 sets of building hoists and more than 20 sets of concrete placing booms. At the same time, the company has the qualifications for rental, installation and dismantling, and has the ability to integrate construction machinery renting.





NETEC Inspection and Testing (Beijing) Co.,Ltd is the operating entity of the inspection and testing business of BICM, and the legal person supporting unit of the **National Elevator Inspection and Testing Center** and **National Center for Quality Test of Building Engineering Branch Center of Construction Machinery,Formwork and Scaffold**.The company is mainly engaged in the inspection and testing, appraisal and review, technical services and other work of elevators, hoisting machinery, aerial work machinery, and construction equipment products.



Rebar processing machinery

A1 Steel wire processing machinery

Intelligent stirrup bender



Intelligent rebar straightening and cutting machines



Intelligent floor bar bending line



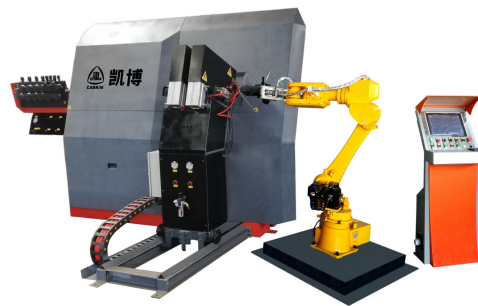
Intelligent multi-functional steel wire stirrup bender



Intelligent straight steel wire stirrup bender

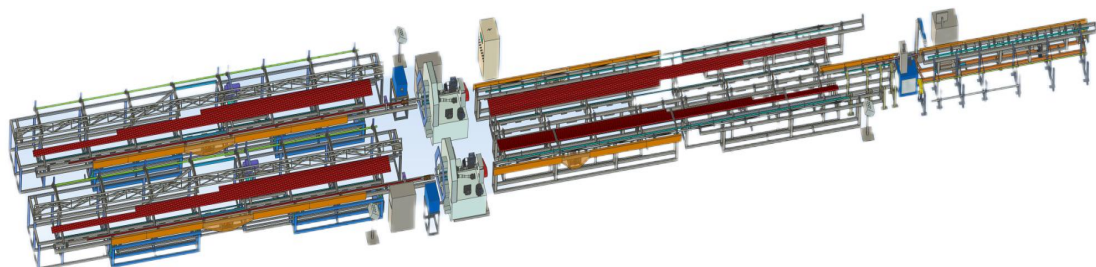


Intelligent closed-stirrup bender



A2 Steel rod bar processing machinery

Anchor production line for tunnel support



Intelligent steel bar cutting line Intelligent rebar sawing line Intelligent vertical steel bar bending line



Intelligent vertical steel bar bending line (Five bending heads) Intelligent horizontal rebar bending line



A3 Automatic steel bar welding line

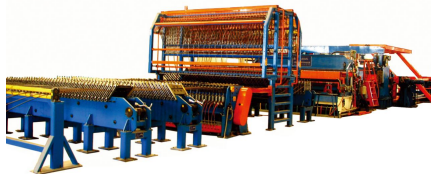
Intelligent steel cage welding line



Intelligent steel lattice girder welding line



Intelligent steel mesh welding line



Flexible Manufacturing steel mesh welding line



A4 Rebar mechanical splicing technology



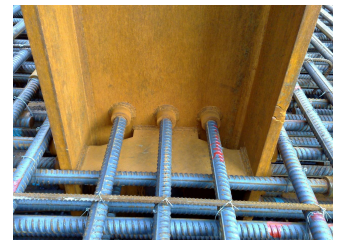
Rebar rib-peeling and thread rolling machine



Parallel thread rebar joint



Split type



Weldable type

Hoisting machinery

B1 Building hoist

General building hoist



Material hoist



Curved and inclined building hoist



Industrial hoist



Multifunctional building hoist



Heavy duty building hoist



B2 Hydraulic jacking bridge



B3 Mast-climbing work platform



B4 Self erecting tower crane



Concrete mortar machinery

C1 Concrete placing boom

Mobile type



Self-climbing type



Climbing-form type



Stationary type



C2 Concrete pump

HBT series concrete pump



XHB small fine concrete pump



C3 Mortar machinery

UB series mortar pump



UH4 mortar combined machine



Other mortar machines



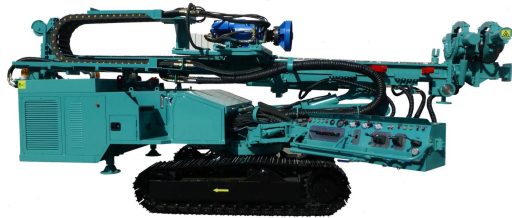
C4 Concrete bucket



Piling machinery

D1 Multi-function drilling rigs

JD110



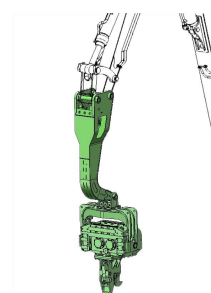
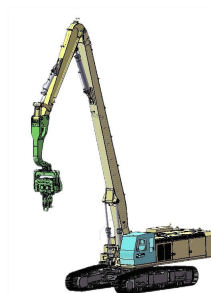
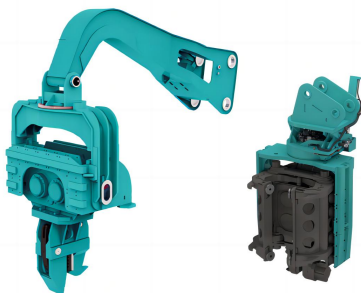
JD180



D2 CBM drilling rigs



D3 Excavator-mounted hydraulic vibratory pile driver



Building maintenance unit

E1 BMU with fixed jib



E2 BMU with telescopic jib



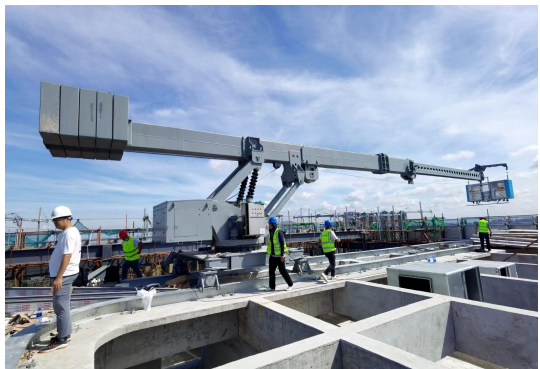
E3 BMU with luffing jib



E4 BMU with telescopic column



E5 Four-link BMU



E6 Other type





JNINE 建研



ADD: ①No.21,Fangjia Hutong,Andingmen,Beijing,100007

TEL: +86-10-84018483

②No.61,Jinguang Road,Guangyang District,Langfang,Hebei,065000

TEL:+86-316-2315238 +86-316-2034641

E-MAIL:sales@cabrm.com

WEB:www.cabrm.com

Please scan the QR code on the right to
download the detailed brochure.

